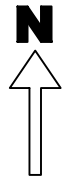
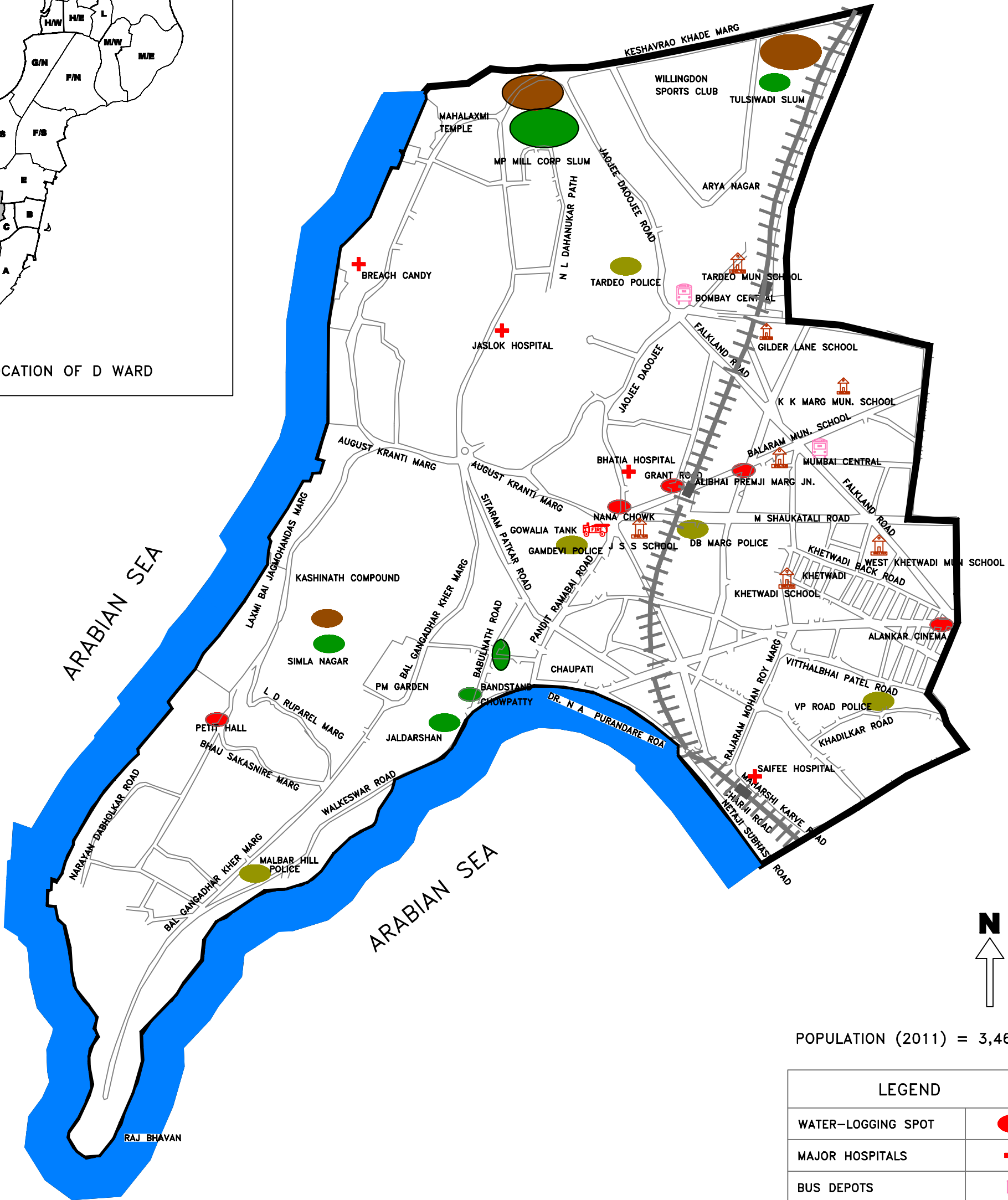
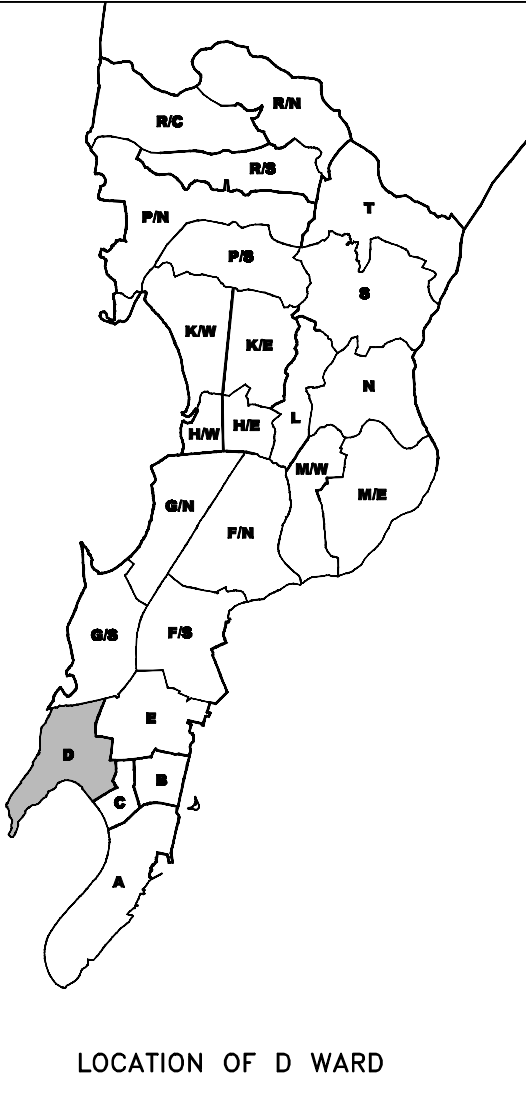


D-Ward



POPULATION (2011) = 3,46,719

LEGEND	
WATER-LOGGING SPOT	
MAJOR HOSPITALS	
BUS DEPOTS	
POLICE STATIONS	
FIRE STATIONS	
SHELTER/MUN.SCHOOLS	
LANDSLIDE PRONE AREAS	
VULNERABLE SETTLEMENT	
NULLAHS	
RAILWAY STATIONS	

NOT TO SCALE